



CHRISTMAS IN THAILAND

2024 - Classic Tour | 13 Days | Physical Level 1

Bangkok (3N) – Kanchanaburi (1N) – Chiang Rai (2N) – Hmong Hilltribe Lodge
(1N) – Chiang Mai (3N)

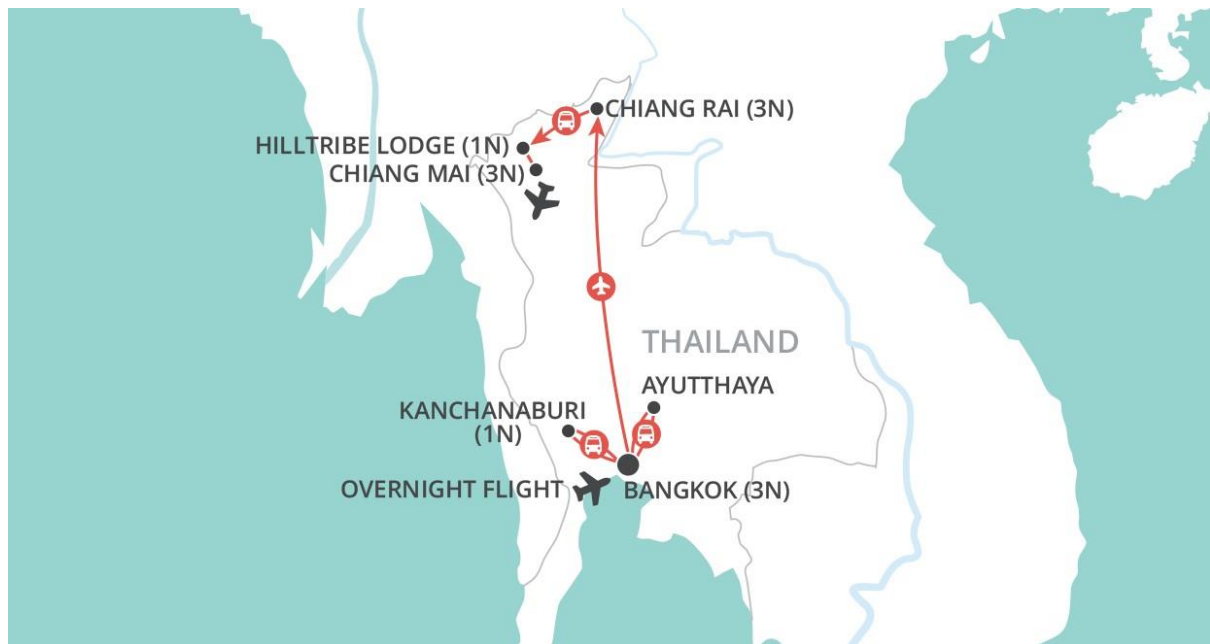
A two-week journey from south to north, this perfect first-timer tour of Thailand encompasses all the top sights as well as venturing into less-explored areas. Explore pristine nature, learn to cook like a Thai, and immerse yourself local culture with a stay at a beautiful eco-lodge run by a local hill tribe community.

- Spend Christmas morning at an elephant sanctuary
- Tuck into Christmas dinner at a former colonial mansion
- Marvel at Bangkok's Grand Palace
- See the Bridge on the River Kwai
- Meet Hmong and Yao hill tribes
- Master Thai cuisine with a cooking class in Chiang Mai

To book call **0800 936 3998** or visit your local travel agent

Visit [wendywutours.co.nz](https://www.wendywutours.co.nz)

TOUR MAP



CLASSIC TOUR INCLUSIONS:

- Return international economy flights, taxes and current fuel surcharges (unless a land only option is selected)
- All accommodation
- All meals (from dinner on the day of arrival until breakfast on the day of departure)
- All sightseeing and entrance fees
- All transportation and transfers
- English speaking Local Guides
- Specialist advice from our experienced travel consultants
- Safe and secure with IATA

The only things you may have to pay for are personal expenditure e.g. drinks, optional excursions or shows, insurance of any kind, customary tipping, meals not included, early check in or late check out and other items not specified on the itinerary.

CLASSIC TOURS:

These tours are designed for those who wish to see the iconic sites and magnificent treasures of South America on an excellent value group tour whilst travelling with like-minded people. The tours are on a fully inclusive basis, so you'll travel with the assurance that all your arrangements are taken care of. You will be accompanied by our dedicated and professional National Escorts and local guides, whose unparalleled knowledge will turn your holiday into an unforgettable experience.

PHYSICAL LEVEL 1:

All our tours feature a physical rating to help you select the right holiday for you. To travel on any of our tours requires unaided mobility and the ability to stroll around the sights.

'Christmas in Thailand' is rated as a **physical level 1** tour. A reasonable level of fitness is required, and you should expect to be on your feet for much of the day. You'll be getting on and off coaches, trains or boats and walking around the sights, often including steps, plus occasional longer walks.

- There will be sightseeing on foot for both short and extended periods of time, often on uneven surfaces.
- You will be required to get on and off small boats without assistance.

Of course, our National Escorts and local guides will always endeavour to provide the highest level of service and assistance; however, they cannot be expected to cater for customers who are unfit to complete the itinerary.

If you require any more information about the pace of our tours, please contact our reservations team who will be happy to answer your questions.

JOINING YOUR TOUR:

The tour is 13 days in duration including international flights or 12 days in duration based on 'Land Only'. Join the tour on Day 1 in Bangkok and end the tour on Day 12 in Chang Mai.

Travellers booked on 'Land Only', the price includes your arrival/departure airport transfers if arriving/departing on the start and conclusion date of your tour, or when booking pre and post night accommodation with Wendy Wu Tours.

ITINERARY CHANGES:

It's our intention to adhere to the day-to-day itinerary as printed; however, the order of events or sightseeing may change as we look to improve our tours or as local conditions dictate. In these circumstances we'll make the best possible arrangements maintaining the integrity of your trip.

DETAILED ITINERARY

Days 1:

Bangkok

Meals: D

You will be met at Bangkok Airport by your local guide or National Escort from Wendy Wu Tours. Together with all other group members who may be arriving at a similar time, transfer approximately 1 hour to your hotel.



Destination Information

Bangkok - Bangkok has been Thailand's dominant city since the 18th century. It was established as the capital after the former capital, Ayutthaya, was razed to the ground by the Burmese army. It was the centre point of the modernisation of Siam in the late 19th century, leading the introduction of rail transport, the printing press, healthcare and utilities infrastructure. With a population of over 10 million, the fast pace of the city can be intense; however, beneath the hustle and bustle, there are many hidden gems waiting to be discovered.

Day 2:

Bangkok

Meals: B, L, D

Bangkok's dazzling neon signs, charming architecture, Thai cuisine and lively markets make for an exciting introduction to this fascinating country.

Enjoy a Bangkok city tour, Tour the Grand Palace, Wat Pho and Chinatown before cruising down Chao Phraya River on a longboat to Pak Khlong Talaat Flower Market, whilst enjoying an alternative view of the city.



Sightseeing involves around 5 hours on foot today and involves hopping on and off the boats, often on unsteady and sometimes slippery surfaces, without handrails or assistance.

Destination Information

Wat Pho – Wat Pho is one of Bangkok's oldest and largest temples. Experience the monk's chant as you explore the grounds of the complex, spread over some 80,000 square metres. The largest reclining Buddha and the largest collection of Buddha images are housed here.

Grand Palace - The Grand Palace is the city's most famous landmark. From 1782 until 1925, it was the official residence of the Kings of Siam; it is still used for many royal ceremonies and state events. It Palace are several impressive buildings, including the Temple of the Emerald Buddha.

Temple of the Emerald Buddha – This royal chapel, found within the grounds of the Grand Palace, is one of the most sacred sites in Thailand. It houses a 26-inch-tall statue of the meditating Buddha; opinions differ as to whether it is made of jasper or jade, but it is believed to date to the 15th century. It is venerated as the palladium of Thailand; a protective figure which secures the country's safety.

Pak Khlong Talat Flower Market - The biggest wholesale and retail fresh flower market in Bangkok. Look out for the Phuang Malai garlands, often given as offerings or kept for good luck.

Day 3: Bangkok - Kanchanaburi

Meals: B, L, D

Begin at the Maeklong Railway Market in Samut Songkram, and enjoy the spectacle as vendors quickly pack up their stalls to let trains pass directly through the market. Continue to Damnoen Saduak Floating Market, where you'll hop in small boats to explore the market's bustling canals.



Continue to Kanchanaburi, made famous by 'The Bridge on the River Kwai'. During the Japanese occupation of Thailand in WWII, tens of thousands of Allied POWs and Southeast Asian indentured labourers were forced to build the Thai-Burma Railway, often called the Death Railway; many of the prisoners died under the brutal conditions. Learn about their tragic story at the Thai-Burma Railway Museum, then pay respects to the victims at the Allied War Cemetery before checking in at your hotel.

Destination Information

Maeklong Railway Market - A open-air market with a little difference – set on the railway track! Enjoy the unique experience as you see the experienced vendors quickly pack up their stores as the train approaches.

Damnoen Saduak Floating Market - One of Thailand's most famous floating markets, consisting of a maze of narrow canals lined with sampans (small wooden boats) piled high with colourful fruit, street food and souvenirs. Hop in a longtail boat and soak up the atmosphere, watching as the traders entertain passersby.

Thai Burma Railway (Death Railway) - Japan invaded the then-neutral Thailand in 1941, and subsequently invaded Burma (now Myanmar), with the aim of seizing control of Burma from the UK. Japan's project aimed to connect Bangkok to Rangoon (Yangon) by rail to supply their troops. To complete such a huge undertaking, Japan used the forced labour of approximately 250,000 Southeast Asian civilians and over 60,000 Allied prisoners of war, who suffered under the brutal conditions. Over 100,000 of the victims died in its construction.

Allied War Cemetery – The last resting place of almost 7,000 prisoners of war. The graves here belong to British, Dutch and Australian PoWs who died while building the railway; the remains of the Americans were repatriated.

Day 4: Kanchanaburi – Death Railway - Bangkok

Meals: B, L, D

Visit Hellfire Pass, a dramatic part of the railway that literally cuts through mountain. Begin at the Hellfire Pass Memorial Museum, which tells the stories of human suffering at the hands of this engineering feat, before a 3 kilometre walk through the pass.



Finally, take a short train journey on the Death Railway and see more of this beautiful valley before driving back to Bangkok.

Please note the 3km walk will be on uneven ground, involves some steep steps and it is likely to be humid; bring mosquito repellent. If you do not wish to take part, you will still be able to see the pass from around 15 minutes' walk from the museum, and you may remain in the museum area independently.

Destination Information

Hellfire Pass - Constructed for the Burma Railway during the Japanese occupation of Thailand in the Second World War. This remote part of the railway was particularly hard to build due to the scale of rock-cutting required. Its name derived from the eerie glow produced by the torches at night.

Day 5: Ayutthaya – Chiang Rai

Meals: B, L, D

Drive 90 minutes east out of Bangkok to discover the historic ruins of Ayutthaya, the historic capital of Siam from 1350 until its destruction by Burmese invaders in 1767.



Begin at the restored Bang Pa-In Summer Palace, with its vast gardens, throne room, gilded pavilions and brightly-painted lookout tower.

Continue to Wat Phra Sri Sanphet, with its three distinctive stupas, each of which hold the ashes of a king. Admire Wat Chaiwattanaram, built in 1630 to honour the king's mother. It was designed in the Khmer style and resembles a smaller Angkor. Sightseeing around Ayutthaya will involve around 3 hours on foot.

This afternoon, return to Bangkok for your 80-minute flight to Chiang Rai.

Day 6: Chiang Rai & The Golden Triangle

Meals: B, L, D

This morning, head out to admire the area known as the 'Golden Triangle'; the point where the borders of Thailand, Laos and Myanmar meet. This area was once a hub of opium production, but since the 1970s, Thailand has been promoting local initiatives to enable locals to switch to other sources of income, such as tea, coffee and tourism.



Continue to Mae Sai, the northernmost point of Thailand and an important trading town on the Myanmar border. Return to Chiang Rai for dinner; afterwards, you may wish to explore the city's colourful night market.

Destination Information

Chiang Rai Province - The northernmost province of Thailand, sharing borders with Myanmar and Laos, and also one of the most ethnically diverse provinces in Thailand. The province is abundant with natural scenery; lush rice terraces, hills scattered with orchids and the mountains of Myanmar and Laos are visible in the distance.

Chiang Rai City – This provincial capital city has a population of some 200,000 residents. Founded in 1262, it is the charming older brother of Chiang Mai, with a wonderfully relaxed atmosphere.

Day 7: Tribes & Tea Plantations in Mae Salong

Meals: B, L, D

Drive 90 minutes through rolling countryside to Mae Salong Mountain, renowned for its hill tribes and tea plantations. From the base of the mountain, travel by truck to a plantation, where you will have an opportunity to sample the local tea.



Enjoy lunch at a mountaintop restaurant before an excursion to Mae Salong, visiting a tea plantation, a Yao Tribe and an Akha village known as Ban Lorcha. Sightseeing today will include approximately 3 hours on foot.

Destination Information

Ban Lorcha - This Akha community relies on tourism for its income, and is organised by the Population & Community Development Association, which aims to create a sustainable tourism strategy for hilltribe villages. Items in the souvenir shop here are made in the village itself. The Akha themselves are an ethnic group who originated in China, migrating into Southeast Asia in the early 20th century.

Day 8: The White Temple & Hmong Hilltribe Lodge

Meals: B, L, D

Depart Chiang Rai and take a short 30-minute drive to explore Wat Rong Khun, the bizarre and fascinating 'White Temple'. Stop at a local market before lunch.



This afternoon is spent crossing the countryside, passing forests, farms and villages to reach the Hmong Hilltribe Lodge. Here you will be guests of the Hmong community. The Lodge is made up of ten individual houses, each comprising of four separate bedrooms with private en-suite bathrooms, arranged around a central communal area.

This evening, enjoy a barbecue dinner and a cultural show.

Destination Information

White Temple - One of the most recognisable temples in Thailand, the unorthodox White Temple is a contemporary Buddhist and Hindu temple, an ongoing project started by Thai artist Chalermchai Kositpipat in 1997. Inside, you will see a surprising fusion of imagery depicting the 'wickedness of mankind', with images ranging from nuclear warfare to (less explicable) fictional characters such as Freddy Krueger, all interspersed with the faces of fiery demons.

Hmong Hilltribe Lodge - Built in traditional Hmong style and managed by the Hmong community, with an eye for Western comforts. The guest cottages overlook the lush fields and hills surrounding the valley.

Day 9: (Christmas Eve) Bamboo Rafting & Chiang Mai

Meals: B, L, D

Depart the lodge and drive an hour north to Mae Daeng to enjoy a relaxed bamboo rafting trip on the Mae Daeng River. Sit back and enjoy the passing scenery as your boatman steers you along the river.



Afterwards, head to Chiang Mai and visit a social enterprise café. This little restaurant offers life-changing vocational training to reformed women from Chiang Mai's Correctional Institution. The skills they learn here enable them to reintegrate into society with the skills for a new career.

This afternoon, visit two of Chiang Mai's most important temples, Wat Chedi Luang and Wat Phra Singh.

Destination Information

Chiang Mai - Nestled among high mountains, Chiang Mai is the largest and most culturally significant city in northern Thailand. The city was founded in 1296 and was the capital of the Lanna Kingdom after Chang Rai. During the 20th century, Chiang Mai became a thriving centre for handicraft pottery, weaving, silverwork and woodcarving; however tourism took over in the 1960s as the main source of income. Today, Chiang Mai is famous for its hilltribes, tea plantations and elephants.

Day 10: (Christmas Day)

Elephant Rescue & Christmas Dinner

Meals: B, L, D

Enjoy a wonderful start to Christmas Day – a visit to an elephant sanctuary! The centre is located in the beautiful Mesa valley and offers a peaceful retirement home for elephants rescued from illegal logging camps and elephant shows. Meet one of their caretakers, who will guide you through the centre, explaining about the centre and its inhabitants.



Return to Chiang Mai and freshen up at the hotel before this afternoon's Thai Christmas dinner at the lovely **House by Ginger**. This 1930s colonial mansion has been preserved as a stylish restaurant with a luxurious yet homely atmosphere.

This evening, return to the hotel and relax, or stay out in town and continue to celebrate at your leisure.

Day 11: (Boxing Day)**Cooking Class & Wat Doi Suthep**

Meals: B, L, D

Spend Boxing Day morning at a cooking class, learning to cook traditional Thai cuisine and enjoy your creations for lunch. Later, drive to Wat Doi Suthep, a beautiful hilltop temple with panoramic views across the countryside. You will have the choice of climbing the Naga staircase (300 steps) or catching the cable car to visit the exquisite golden pagoda.

This evening, enjoy a typical Khantoke dinner while watching a performance of traditional song and dance from Northern Thailand by various hill tribes.

**Day 12-13:****Departure**

Meals: B

Transfer to the airport for your onward flight. Late checkout is bookable in advance for those who have chosen a later flight option.

If you wish to extend your stay in Southeast Asia, please talk to our team about our various private extension packages before your departure. We have options for hiking in Sapa, beach breaks in Mui Ne, Phuket or Hua Hin, city stays in Singapore, and more.

THAILAND TRAVEL INFORMATION

VISAS:

Thailand – New Zealand passport holders do not need a visa for Thailand if they are travelling for less than 30 days for tourist purposes.

Please note the visa procedures and requirements may change at any time. These changes are often made by the relevant embassy or consulate, Wendy Wu Tours acts as a third party and has no influence on the process of a visa.

Currently a visa is required for New Zealand Passport holders. Your travel consultant will inform you if any changes are applicable prior to your departure.

INSURANCE:

We strongly recommend that you take out a policy as soon as you pay your deposit. Wendy Wu Tours cannot in any way be made liable for any additional cost incurred by the customer on any tour due to the customer not having adequate travel insurance.

We also encourage all customers to take a copy of their travel insurance documents (especially relevant international contact numbers) with them while on tour. We advise that you check the inclusions and procedures for lodging claims prior to your departure. These documents should be stored separately from the original.

EATING IN SOUTHEAST ASIA:

Southeast Asia is home to an incredibly rich food history. The local cuisine is known for its intense flavours, spices and some of the freshest ingredients you can find. In general, meals include either rice or noodles and are packed full of flavour. Lemongrass, ginger, lime leaves, coriander, fish sauce and soy sauce are used in most local dishes. Whilst Southeast Asian food has a reputation for being hot and spicy, each region actually has its own distinct characteristics.

Your itinerary has been carefully crafted to introduce you to a range of local dishes and we hope that you enjoy the culinary adventure ahead. All meals (excluding drinks) are included in our fully inclusive group tours from dinner on the day of your groups' arrival until breakfast on your day of departure. When dining in Southeast Asia, although some restaurants have adopted a western approach to dining, expect some restaurants to follow the traditional communal style of eating. Typically, this will mean each diner has their own small bowl and may serve themselves from a variety of shared dishes. At some local restaurants, appetizers and main courses might be served when they are ready instead of following a particular order.

Determining when it's appropriate to use chopsticks, forks or spoons can be challenging for some travellers, even other Asians, as each country has different customs. In Thailand and some other

countries in Southeast Asia, fork and spoon are used for most dishes and chopsticks are typically provided to eat noodles. Usually, chopsticks or other utensils are provided to scoop the food into your bowl to prevent your own chopsticks from touching the food that remains on the table. Dining in Southeast Asia is fairly casual with not too many rules. Leaving food on the plate is not considered rude.

**PLEASE INFORM US OF ANY ALLERGIES AND/OR SPECIAL DIETARY REQUIREMENTS
AT TIME OF BOOKING**

DEVELOPMENT IN SOUTHEAST ASIA:

Although Southeast Asia is developing quickly, it still lacks the international standards of civil infrastructure and tourist facilities. Concepts of personal responsibility are also different to those in New Zealand. Consequently, tourist and public facilities may not uphold the same safety standards as in New Zealand; for example, you may see a hole in the road without a warning sign or safety barricade. All of our suppliers meet local safety standards as a minimum. We want you to have an enjoyable holiday, so we ask that you take extra care, use your common sense, refer to notices and follow advice from your National Escort or Local Guides.

TIPPING POLICY:

Tipping while on holiday is common in most parts of the world and Southeast Asia is no exception. However, it is not always clear who it is appropriate to tip and how much. Furthermore, travellers may not have the right amounts of cash available at the right time. In order to avoid any inconvenience Wendy Wu Tours operates a tipping policy where a stated amount is given to your national escort at the beginning of your tour and tips are disbursed to local guides and drivers throughout your tour. The amount is designed to be at a reasonable level for travellers while being fair to the local people and includes a gratuity for the national escort.

If you are travelling in a smaller group with local guides only, then tipping is paid in each destination. To be fair to the guides we ask for slightly higher amounts per traveller with small groups.

We generally find that most customers appreciate the convenience of our tipping policy, but we do recognize that it may not suit everyone. However, as this is a group tour, we ask that everyone follows the same protocol to be fair to other group members and to ensure smooth operation of your tour.

LUGGAGE:

All travellers are limited to two items of luggage each; a suitcase with a maximum weight of 20kg and one piece of hand luggage with a maximum weight of five kilograms. It is essential that your luggage is lockable.

ACCOMMODATION:

Your accommodation is selected for convenience of location, comfort or character, and can range from a business hotel in one city to a family run guesthouse in a smaller town. In more remote areas, accommodation may be of a lower standard and may not have all western amenities. Hotels are generally rated as local three to four-star standard, but please note that there is no international classification system for hotels and differences in facilities and quality do exist between New Zealand and Southeast Asia.

All group tour hotels have private western bathroom facilities, air conditioning, TV and telephone. Plumbing and electricity supplies can be erratic and quite often the power in hotel rooms is turned off while guests are out of the room. If you experience any difficulty, please speak to your National Escort/Local Guide. Rest assured that all hotels used by Wendy Wu Tours are regularly inspected by our staff and our partners to ensure that standards meet your needs.

EXCHANGING CASH:

It is highly recommended that extra care and attention is paid when exchanging money when travelling outside major cities in Thailand. US Dollars are easily exchanged throughout Thailand however other currencies such as New Zealand Dollars can generally be exchanged in hotels and airports provided notes are undamaged. We suggest for your convenience that you ensure your US Dollars are from the new series (2013 onwards) to avoid any difficulties exchanging money during your trip. Old series notes can be difficult to exchange.

We suggest exchanging your money before travelling to remote areas and smaller towns, as exchange facilities can be limited. Your National Escort will remind you to do this before departure.

PERSONAL EXPENSES AND OPTIONAL TOURINGS:

Personal Expense - You will need to take some extra money to cover drinks, laundry and souvenirs, plus any additional sightseeing that may be offered to you.

Optional Tours - May be offered in each city you visit during your tour. These are not included in the standard itinerary and will only be available if time permits and if seats are available.

Please ensure you have additional funds available if you feel you may wish to participate in any extra activities. Each option will be arranged locally by your National Escort/Local Guide, participation and tipping for optional excursions is completely at your discretion.

CLIMBING STEPS:

Sightseeing at nearly all of the palaces, fortresses and some temples involves climbing quite a number of steps. These palaces were built to provide defence against potential invaders so nearly all of them stand on top of a hill, while the interiors have layers of narrow hallways and steps to slow down the advance of enemies once they were inside.

The steps tend to be quite large, not level and sometimes without handrails. Hindu and Buddhist temples or pagodas also tend to be built at an elevation, as this is the most auspicious position according to ancient beliefs. This means you sometimes need to walk from the bus park to the entrance, and/or need to climb some steps inside.

People with knee or hip injuries, who have poor balance or are otherwise unable to complete these activities independently should consider the suitability of this itinerary carefully.

APPROPRIATE DRESS:

When visiting temples or mosques, both men and women should dress in conservative, non-revealing clothing. Full-length trousers with a shirt or t-shirt for men; and pants or skirts well below the knee with a top that covers the shoulders and upper arms for women. Women might also consider carrying a 'modesty shawl' in their daypack – this could be a sarong or light scarf – which they can wear over their shoulders and heads to feel more comfortable while sightseeing at mosques.

Religious sites and homes throughout Southeast Asia – for Hindus, Muslims or Buddhists to name a few – require all visitors to remove their shoes to enter. Even if you then need to walk outdoors, over hot or rough ground, you will not be allowed to wear shoes. You will often find shoe storage rooms near the entrance of a site where it is customary to leave your shoes near the entrance. Occasionally there are 'shoe minders' who will offer to keep your shoes safe for a 'tip' – this is not compulsory, so each customer can choose to tip for this service or not. If you do not want to remove your shoes, you will have to remain outside.

We recommend shoes that easily slip on and off and carry a pair of thick socks in your daypack, which you can wear to protect your feet from any rough or hot surfaces. The following itinerary will indicate when you need to consider this.

TRANSPORT:

Coaches: Coaches with air conditioning are used on our group tours for city sightseeing, short excursions to the countryside and longer transfers where necessary. However, minibuses may be used for smaller groups (under 10 passengers).

Roads in Southeast Asia have generally improved over recent years, but traffic and/or weather conditions may extend driving times. Road construction work usually covers an enormous section of road - not just one or two kilometres as you may be used to. For this reason, the timings listed in the itinerary are approximations only.

Seatbelts: Please note that seatbelts are not compulsory by law in Southeast Asia and therefore the local people largely choose not to wear them. For this reason, some vehicles may not be fitted with seatbelts or they may be hidden underneath protective seat covers. It is recommended that where seatbelts are available customers must use them and remain seated at all times while the vehicle is moving. If you have any concerns, please notify your National Escort/Local Guides.

Air: Internal flights are based on economy class, with reputable airlines. Pre-flight seat allocation is not available on internal flight sectors.

VACCINATIONS AND YOUR HEALTH:

We recommend that you contact either your doctor or local Health Centre for advice on vaccinations and travel health. Safe Travel has a comprehensive website that you may also find useful www.safetravel.govt.nz

BEFORE YOU LEAVE:

We strongly recommend registering your travel plans with www.safetravel.govt.nz as in the event of an emergency, New Zealand Consular assistance will be more readily available.

Up until the day you travel, it is vital you keep up to date and familiarised with the entry requirements as these can change at short notice. You are personally responsible for completing any entry forms, conducting any covid tests (if necessary), etc and adhering to countries' specific entry requirements.

You can also access the New Zealand Government's travel advisory service for up-to-date information about your destination on the same website.

AFTER YOUR BOOKING:

Once you have booked with Wendy Wu Tours, you will receive a confirmation along with a link to our website where you can find your visa information (if applicable) and other important information. Your final documentation pack will be sent to you approximately 2-3 weeks prior to departure.

ITINERARY CHANGES:

It is our intention to adhere to the day-to-day itinerary as printed; however, the order of events or sightseeing may change as we look to improve our tours or as local conditions dictate; in these circumstances we will make the best possible arrangements whilst maintaining the integrity of your trip.

Updated: Dec 2023